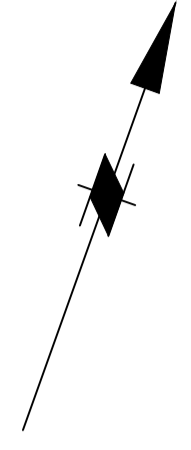
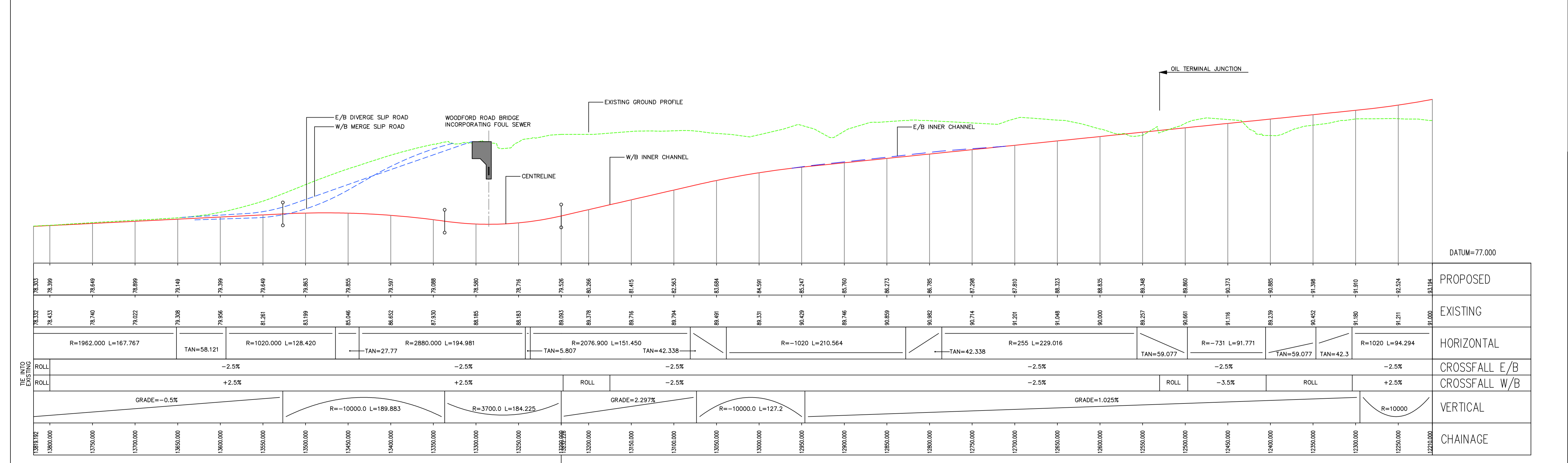
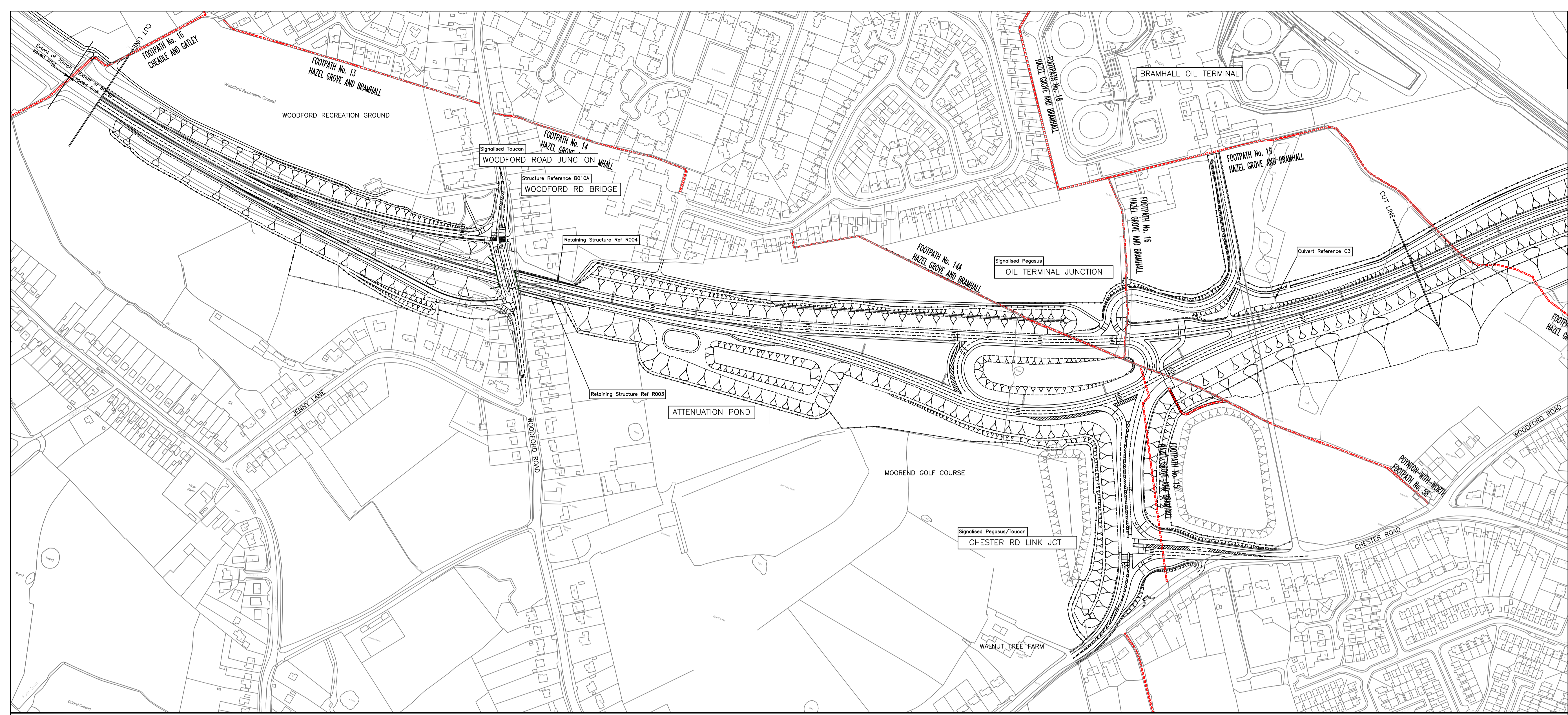


This map is reproduced from Ordnance Survey material with the permission of Ordnance Survey on behalf of the Controller of Her Majesty's Stationery Office © Crown copyright. Unauthorised reproduction infringes Crown copyright and may lead to prosecution of civil proceedings. Stockport Metropolitan Borough Council 100019571 2012



- KEY**
- EXISTING DEFINITIVE PROW
 - EXISTING BRIDLEWAY
 - LADYBROOK VALLEY INTEREST TRAIL
 - PROPOSED FENCELINE



SECTION ALONG E/B INNER CHANNEL OF SEMMMS RELIEF ROAD (SPEED LIMIT 50MPH)

Rev.	Drawn	Checked	Date	Revision Details

www.semmms.info

STOCKPORT MANCHESTER CITY COUNCIL

Jim McMahon BS: C.Eng. MICE
SERVICE DIRECTOR, MAJOR PROJECTS

STOCKPORT HOUSE
STOCKPORT SK10 5SE
TEL : 0161 474 4351
FAX : 0161 474 4653

Job Title
A6 to MANCHESTER AIRPORT RELIEF ROAD

Drawing Title
PLANNING APPLICATION GENERAL ARRANGEMENT SHEET 5 of 9

Drawn	Engineer	Checked	Approved
SP	SP	NH	AB

Date	Date	Date	Date
03.10.13	03.10.13	03.10.13	03.10.13

Size A1 Scale HZ 1:2500, Vt 1:250

SCG No. Filename

Drawing No. 1007/3D/DF7/A6-MA/GA/205 Revision